

**EXPANDED**

# Vinyl Covered Bolster Blocks and Wedges

Reusable Vinyl Covered Blocks, Bolsters & Wedges are manufactured out of firm high-density urethane foam. This style features a durable, heavy gauge reinforced royal blue vinyl outer covering. Sewn seams and tear resistant. These easy to clean bolsters, blocks and wedges are radiolucent, but the seams will show. Provides excellent support for a wide variety of imaging and positioning needs.

YVFA	Cylinder	24" x 8" diameter	\$130
YVF45	Cylinder	26" x 6" diameter	\$124
YVFB	Semi Round Bolster	"8 x 18" x 6"	\$99
YVFG	Block	8" x 12" x 6"	\$85
YVFH	Block	12" x 14" x 3"	\$60
YVFI	Block	24" x 15" x 3"	\$95
YVFJ	Block	8" x 12" x 3"	\$74
YVFK	Block	20" x 13" x 3"	\$85
YVFP	Block	18" x 24" x 4"	\$150
YVF42	Block	12" X 12" X 9"	\$260
YVF43	Block	12" X 12" X 12"	\$305
YVFQ	DEXA Block	20" x 20" x 12"	325



# YVFG



# YVFH



**NEW** # YVFI



#YVFJ



#YVFK



# YVFA



**NEW** # YVF45



# YVFB



**NEW** # YVFP

**CUSTOM  
SIZES  
AVAILABLE**



**NEW** # YVF42



**NEW** # YV43

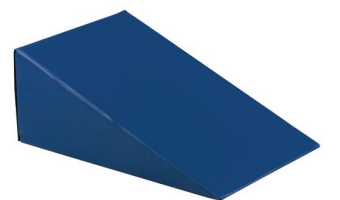


DEXA BLOCK  
**NEW** #YVFQ

# EXPANDED

## Vinyl Covered Wedges

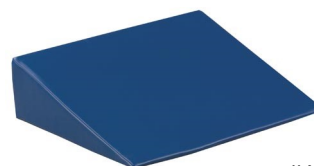
YVFC	20' Wedge	24" x 18" x 6"	\$170
YVFD	45' Wedge	8" x 16" x 8"	\$195
YVFE	20' Wedge	20" x 32" x 12"	\$239
YVFF	50' Wedge	20" x 32" x 12"	\$310
YVFO	45' Wedge	7" x 21" x 7"	\$170
YVFU	30/60/90' Wedge	10" x 24" x 6"	\$180
YVDA	45' Cardiac Wedge	28" x 14" x 14"	\$215
YVDB	30' Cardiac Wedge	28" x 27" x 16"	\$348
YVF40	26' Wedge / Knee Pillow	13" x 17" x 6"	\$265
YVFB	Comfort Wedge	16" x 25" x 8.25"	\$250



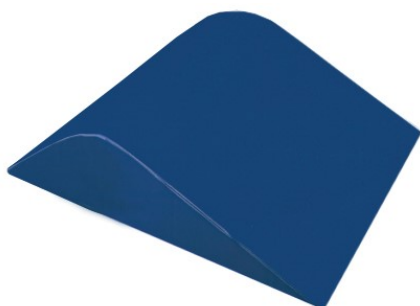
# YVFE



# YVFD



# YVFC



NEW # YV40



NEW # YVFO



NEW # YVFU



# YVFF

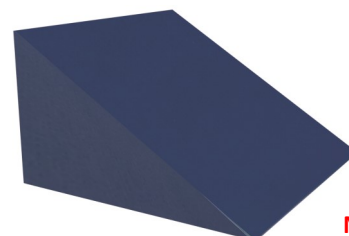


NEW # YVFB

**CUSTOM  
SIZES  
AVAILABLE**



NEW # YVDA



NEW # YVDB

# EXPANDED Vinyl Covered Bolsters

## CUSTOM SIZES & SHAPES AVAILABLE

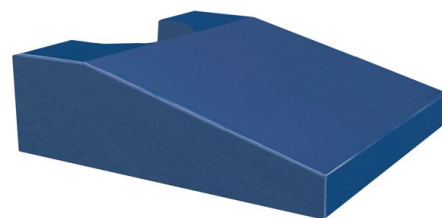
YVF41	Wheelchair/Stretcher Bolster	16" x 23" x 4.5"	\$495
YVWS	Curved Wheelchair Chest Bolster	18" x 20" x 5"	\$250
YVFM	Knee Bolster	16" x 25" x 8.25"	\$250
YVFZ	Endo Ultrasound Wedge	20" x 22" x 6"	\$410



**NEW # YVWS**

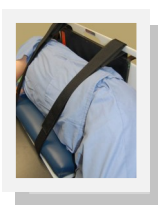


**NEW # YVFM**



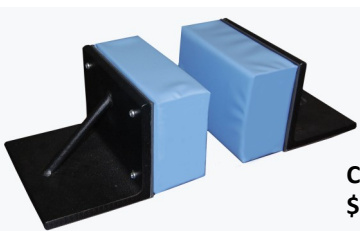
**NEW # YVFZ**

Curved bolster to help with mobile chest x-ray positioning for wheelchair patients.



**Cat# TBC-2214  
\$549**

Lateral Decubitus Positioner: To aid in positioning patients for cross lateral examinations. Decubitus pad ensures the patient is elevated into a position above the place of imaging receptor. Removable straps are easy to position. 20 x 13 x 3 pad



**Cat# RHI-AB  
\$250**

Vinyl Covered Head Immobilizers safely supports & positions a patients head. Solid steel angles with soft, vinyl covered cushions. Blocks weigh 15 lbs each and provide great support. Cushions are 8" w x 6" h x 3" d.



**NEW # YVF41**

Stretcher and Wheelchair bolster is a perfect aide to help with mobile chest x-ray positioning



# NEW Vinyl Covered Kits

YSU1	Kit	Kit contains: YSFB, YVFJ, YVFG-(2)	\$289
YSU2	Kit	Kit contains: YVFG, YFVJ-(2)	\$200
YSU3	Kit	Kit contains: YVFB, YVFD, YVFG	\$330
YSU4	Kit	Kit contains: YVFA, YVFB, YVFC, YVFD, YVFG, YVFH, YVFJ, YVFK	\$775
YSU5	Kit	Kit contains: YVFO, YVFC, YVFD, YVFJ, YVFB	\$640
YSU6	Kit	YVFJ, YVFO, YVFB, YVFK	\$520
TI-SET	Kit	YVFQ, YVFJ, TI-15	\$575



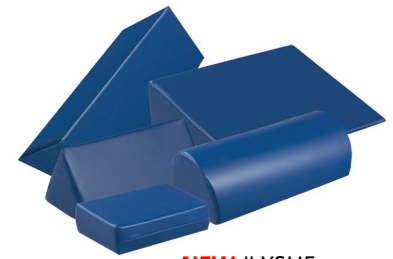
NEW # YSU1



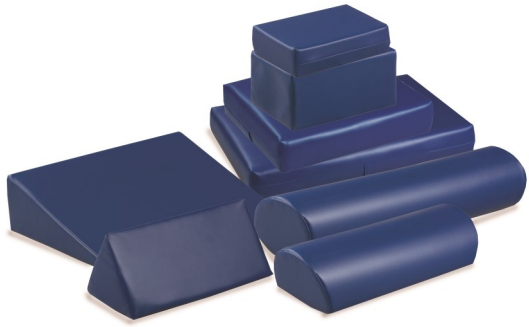
NEW # YSU2



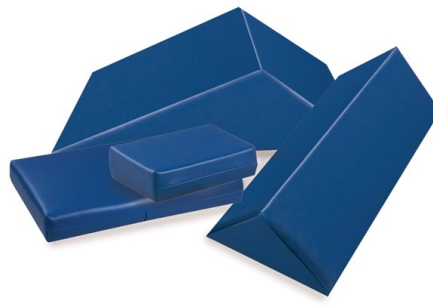
NEW # YSU3



NEW # YSU5



NEW # YSU4



NEW # YSU6



DEXA Positioning Kit. Includes 20 x 20 x 12 Bolster block to aid in positioning AP Lumbar spine, a head bolster and an "A" frame splint designed to abduct both legs approximately 15 degrees to hold in full extension at the hips and knees and to lock the feet in a neutral position.

NEW # TI-SET



**CUSTOM  
KITS  
AVAILABLE**